



Hochschule für Angewandte  
Wissenschaften Hamburg  
Hamburg University of Applied Sciences



Office of  
Sustainability



UK Consortium on  
Sustainability Research

# Franco-Quebec collaboration in the maritime sector – The Institut France Quebec Maritime and the ARICO coastal risk project

Sebastian WEISSENBARGER, Guillaume MARIE, Catherine MEUR-FEREC

TRANSATLANTIC SYMPOSIUM ON SUSTAINABLE DEVELOPMENT: NORTH AMERICAN AND  
EUROPEAN PERSPECTIVES ON SUSTAINABILITY IN HIGHER EDUCATION  
MASSACHUSETTS INSTITUTE OF TECHNOLOGY, 2nd-4th OCTOBER 2023

UNIVERSITÉ  
**TÉLUQ**

50  
ANS



**ARICO**  
Adaptation aux RISques CÔtiers

# The Institut France Québec Maritime

\* Institut France-Québec pour la coopération scientifique en appui au secteur maritime -  
<https://www.rqm.quebec/>

- Created 2016 after a meeting of the prime ministers of France and Quebec
- Context of planetary changes, climate change, globalisation of economy, opening of the north-west passage, etc.
- May 8-9 2017 : First meeting in Montreal, determination of the scientific programme
- Various activities:
  - Financing of bilateral research projects
  - Student and researcher mobility (exchanges)
  - Summer schools (Saint-Pierre et Miquelon, Bordeaux)



# The Institut France Québec Maritime

THEME 1 : ECOSYSTEMS AND POPULATION HEALTH

THEME 2 : FISHING AND AQUACULTURE

THEME 3 : DYNAMICS AND ADAPTATION OF COASTAL TERRITORIES

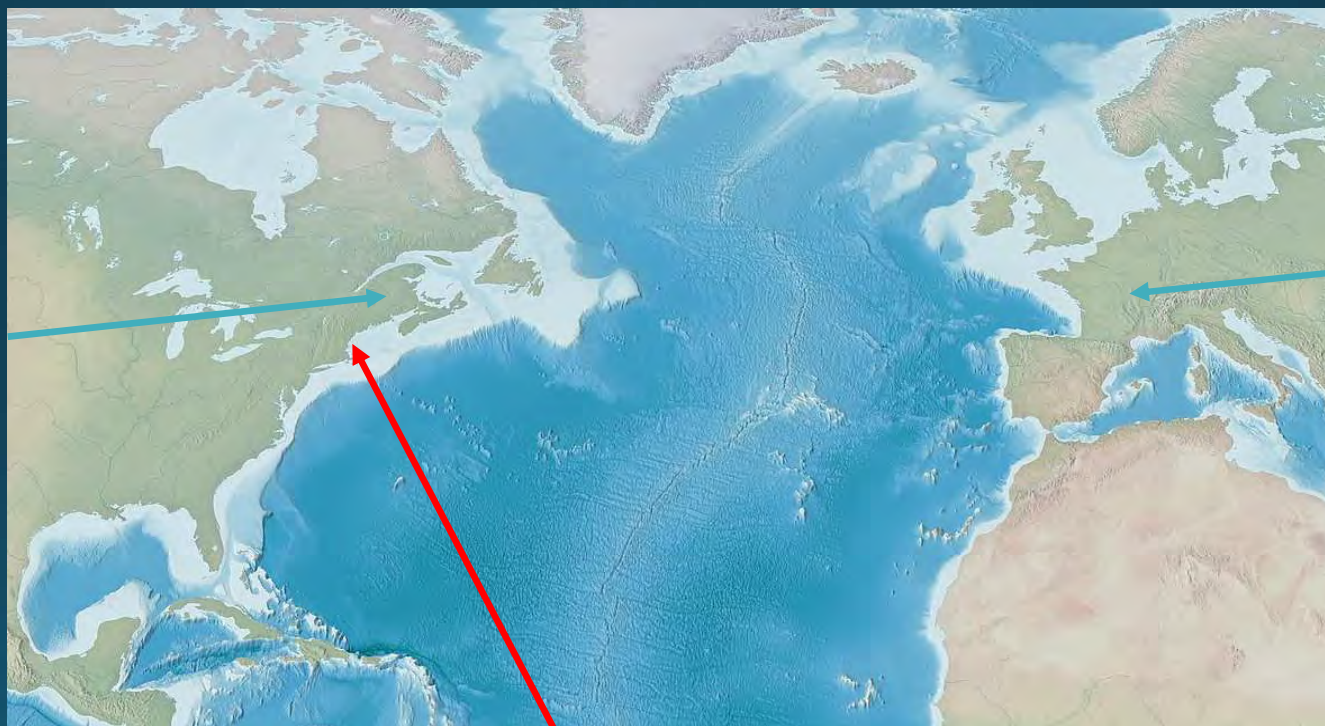
THEME 4 : MARITIME SURVEILLANCE AND SAFETY

THEME 5 : SUSTAINABLE AND INTELLIGENT MARITIME « TRANS-PORT »

THEME 6 : MARITIME BIOTECHNOLOGIES AND ENGINEERING



# The Institut France Québec Maritime



You are here

# The ARICO coastal risk project



- Co-construction of adaptation scenarios in maritime territories to coastal risks in a context of climate change in France and Quebec
- Funded by national research agency France (ANR) and fondes de recherche du Québec (FRQ)
- Duration: 3 years (octobre 2020 – september 2023)
- Two territories: south Bigouden country in France, Matanie in Quebec
- Co-leadership of project and each WP
- Interdisciplinary orientation: natural sciences, social sciences, environmental sciences
- Intersectorality: coastal managers of both countries included and participate in exchanges and field trips

# Vulnerability assessment



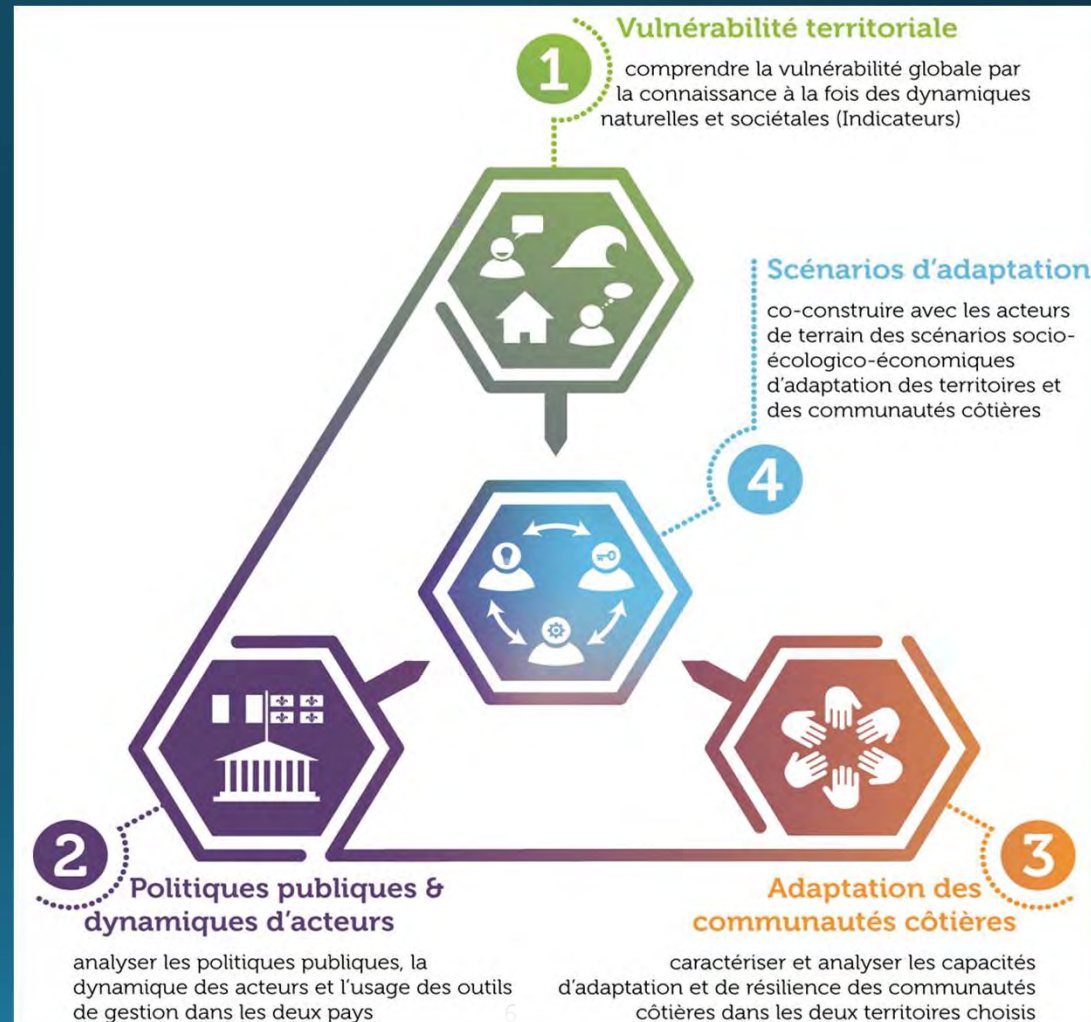
Public policies and actors' networks

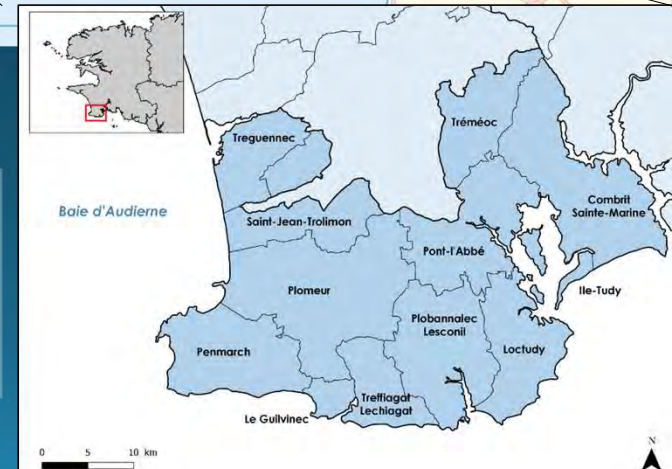
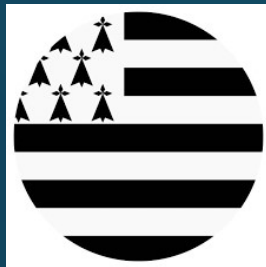


Adaptation strategies and capacity

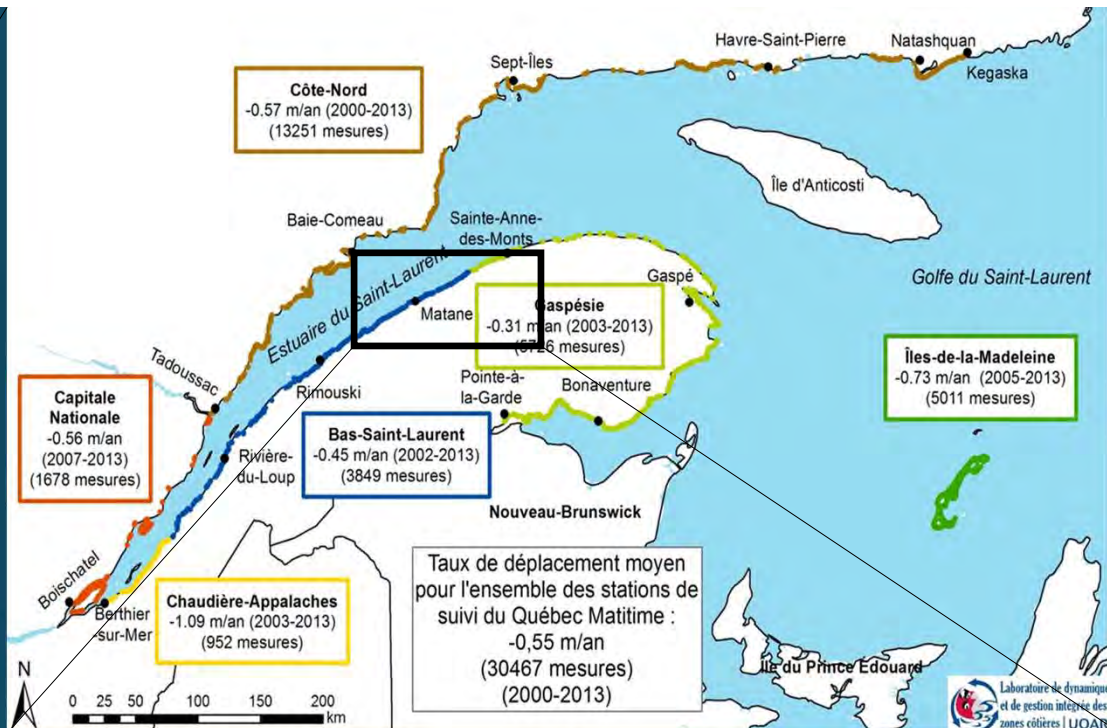


Adaptation scenarii & serious game





- 17 communes, 7 coastal
- 37 334 inh. (2017)
- Low coasts and polders
- Tourism, residential, services



- 11 municipalities and NOT, 6 coastal
- 21 301 inh. (2016)
- Low sedimentary coasts and cliffs



# UBO

Université de Bretagne Occidentale

Laboratoire de psychologie  
cognition  
comportement  
communication  
EA 1285



**Elisabeth Guillou**  
Professeure  
Psychologie sociale /  
Psychologie

environnementale

Amure  
CENTRE DE DROIT ET D'ÉCONOMIE DE LA MER



**Manuelle Philippe**  
Ingénieure  
d'études

**Frédérique Alban**

Enseignant-  
chercheur

Économie

Université  
de Lille

**Philippe Deboudt**  
Professeur,  
Géographie



**Christelle Audout**  
Ingénieure de  
recherche

**Marie Laboureur**  
Ingénieure de recherche



**Catherine Meur Ferec**  
Enseignant-  
Chercheur  
Géographie



**Iwan Le Berre**  
Enseignant-Chercheur  
Géographie



**Alain Hénaff**  
Enseignant-  
Chercheur  
Géographie



**Serge Suanez**  
Enseignant-Chercheur  
Géographie



**Laurence David**  
ingénieure d'études

TVES  
TERRITOIRES  
VILLES  
ENVIRONNEMENT  
& SOCIÉTÉ  
UR 4477

ulco  
Université  
Littoral Côte d'Opale

**Caroline Rufin-Soler**  
Enseignant-Chercheur  
Géographie



**Hervé Flanquart**  
Professeur, Sociologie

**Philippe Chagnon**  
Ingénieur d'Études



# UQAR



**Département sociétés, territoires et développement**

**Steve Plante**, Professeur  
Développement régional



**Martin Laroche**  
Candidat au doctorat en  
développement régional



**Laurie Desrosiers-  
Leblanc**  
Agente de recherche



**Pascal Bernatchez**,  
Professeur, Géographie



Laboratoire de dynamique  
et de gestion intégrée des  
zones côtières | UQAR



**Julie Delannoy**  
Docteurante



**Julia Verdun**, Agente de  
recherche



**Susan Drejza**,  
Agente de recherche



**Guillaume Marie**,  
Professeur,  
Géographie



**Christian Fraser**, Agent de  
recherche

UNIVERSITÉ  
**TÉLUQ**



UNIVERSITÉ  
**LAVAL**



**Sebastian Weissenberger**  
Professeur, Sciences de  
l'environnement



**Geneviève Cloutier**  
Professeure, Études  
Urbaines



Coord. Arico



Coord. LT2



Coord. LT4



Coord. LT1



Coord. LT3

# Professional partners

- Municipalities
- Regional municipalities
- Provincial ministries (environment, public safety)
- Natural Parks
- NGOs

- Elected officials, mayors
- Planners
- Administrators
- Natural Parks
- NGOs



**Pays Bigouden Sud**  
COMMUNAUTÉ DE COMMUNES



**Benjamin Buisson**  
Resp.pôle littoral et biodiversité



**Guillaume Esteva**  
Ch. Mission Submersion marine



**Joachim Houbib**  
Ch. Mission vulnérabilité des habitations



**Monique Cassé**  
Directrice




**Juliette Herry**  
Ch. Mission climat et gestion intégrée du littoral




**Ronan Pasco**  
Resp. pôle mer littoral



**Jérôme Landry**  
Président du comité maritime  
Maire de Matane



**Caroline Pinsonnault**  
Conseillère en sécurité civile  
Région Bas St Laurent



**Jean-Denis Bouchard**  
Conseiller en gestion des risques naturels



**Frédéric Mogenot**




**Vincent Ducros**  
Ch. Mission risques fluviaux et littoraux




**Jérôme Bignon**





**Anne-Marie Favreau**  
Directrice Environnement





**Olivier Banville**  
Directeur de l'Urbanisme




**Caroline Ratté**  
coordonnatrice en environnement

**Jonathan Pothier**  
Chargé de projets




**Québec**



# Various types of research and transfer activities

- Yearly study weeks in Quebec and France
- Round tables
- Individual interviews
- Open forum
- Mutual planning exercises
- Serious game
- Graphical timeline
- Geomorphology & SIG exchange platform

# Various types of research and transfer activities

- Yearly study weeks in Quebec and France



# Various types of research and transfer activities

- Serious game  
Played with  
Researchers  
Field actors  
citizen



# Various types of research and transfer activities

Multimedia  
timeline

← → ↻ 🔒 www-iuem.univ-brest.fr/wapps/letg/ARICO/CCPBS/#event-tempete-18

**13 DÉCEMBRE 1978**  
**TEMPÊTE**

**ÉROSION**  
*Penmarc'h*

Dalle du trottoir affaissée sur le site de la Joie.

PPR-SM de Penmarc'h du 29 mars 2002

ALÉA  
ENJEUX  
ADAPTATION  
RÈGLEMENTATION

Tempêtes s Tempêtes  
Ter Tempé Te Tem Bré Tempête  
Pré Dégrz Te Érosion Ero Ouragan Tempête  
Tem Te Tempête  
Recensement  
Recensement Domages Recensement Tempête Recensement  
Trav Travaux  
Travaux Arrêté de c Arrêté de cata...  
Mesure réql...  
Loi n°75-602  
L Loi n° 83-8 Loi n° 8 Loi n°87-565  
Décret n° Loi r Loi n° 96-14

1961 1963 1965 1967 1969 1970 1972 1974 1976 1978 1980 1981 1983 1985 1987 1989 1990 1992 1994 1996 1998

# Advantages

- Intercontinental learning – especially for managers
- Reinforcement of transatlantic research networks
- Several student exchanges, including joint degrees
- Renewed motivation, inspiration by what is done on the other continent
- Exploring new solutions



# Challenges & drawbacks

- A lot of transatlantic flights = **sizeable carbon footprint**
- Complex logistics (especially in Covid times)
- Administrative tribulations (eligibility requirements, immigration, accounting rules, endless forms to fill)





# Challenges & drawbacks

- A lot of transatlantic flights = **sizeable carbon footprint**
- Complex logistics (especially in Covid times)
- Administrative tribulations (eligibility requirements, ethics approval, immigration procedures, accounting rules, endless forms to fill)



Trugarez /Merci / Thank you for your attention !



<https://arico.uqar.ca/>